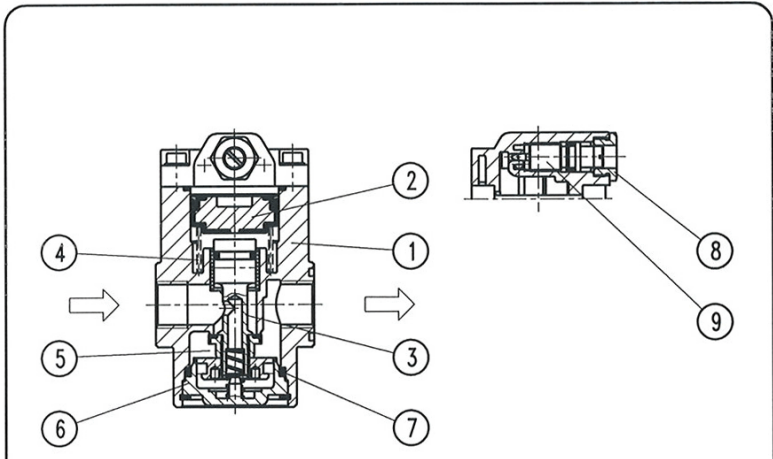


	type	A 06
item		
port size	G 1/4	
description	seat valve, manipulation by secondary pressure	
mounting	arbitrary	
supply pressure	Pe max. 16 bar, Pe min. 2,5 bar	
aperture pressure	50% Pe (only for closed systems)	
media and ambient		
temperature	max. 60°C (oth. temperature ranges available upon request)	
fixing	install in pipe line, bracket	
weight	0,430 kg	

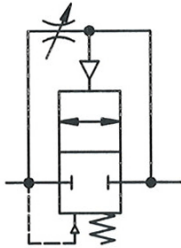



replacement parts

no	description	material	order-no.
1	body	zinc - Z 410	
2	plunger	NBR - Al	
3	valve tappet	NBR - Ms	
4	spring	niro	
5	spring	niro	
6	bonnet	POM	
7	O-Ring 24 x 2	NBR	
8	locking screw	Al	
9	regulating spindle	Ms	

application information

- easy block assembly for components to be connected in series
- interlocking of several individual devices requires coupling kit(s) KP 05 (Pe max. 12 bar)
- by turning the regulating spindle the duration of filling is adjustable



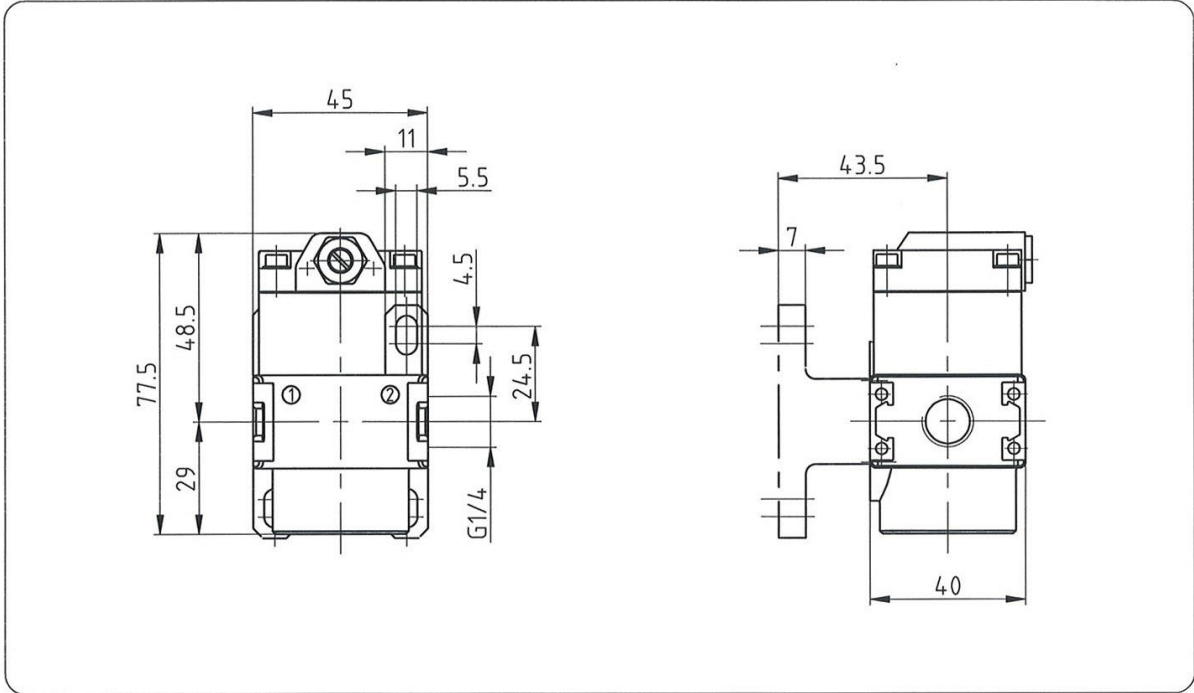
series 0

ordering information

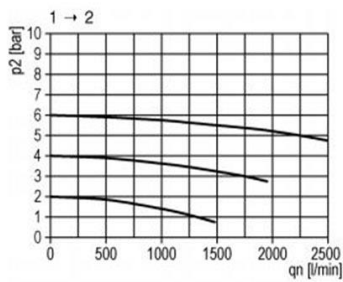
	A	06
type		
1	port size	

port size	
1	06 G 1/4
options	
2	

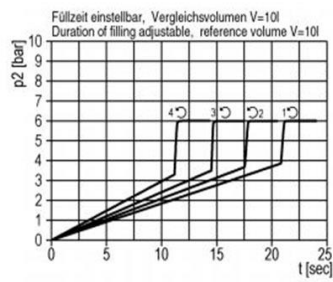
dimensions (mm)



flow characteristics

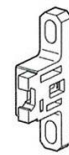


charging characteristics



accessories

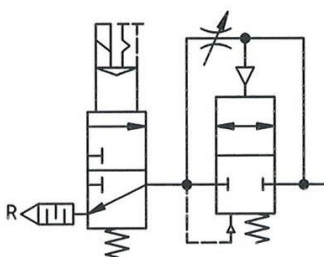
mounting bracket assembly



type: KP 05

various application

3/2-path-valve pressurising unit



aeration of the machinery over throttle setting of the pressurising unit.
 When P2 => 50% opens P1 full profile.
 pressure release over R